



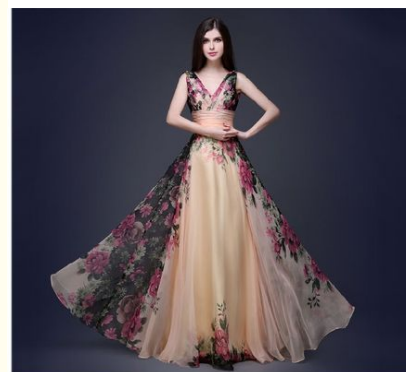
Gorgeous Slim Fit Evening Gowns Elegant Floral Dress With Shoulders

Our Product Introduction

for more products please visit us on stylishladydress.com

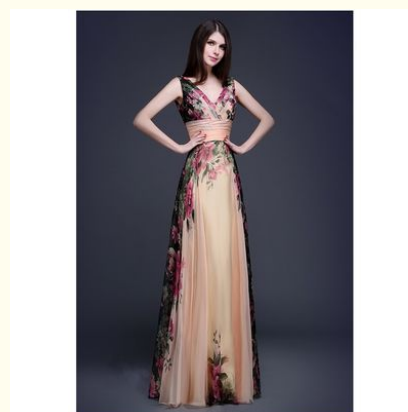
Basic Information

- Place of Origin: china
- Model Number: 9635
- Minimum Order Quantity: expand on
- Price: expand on



Product Specification

- Neckline: V-neck
- Occasion: Evening
- Embellishment: Embroidery
- Gender: Female
- Length: Maxi Dress
- Fashion Element: Zipper
- Name: Slim Evening Dress
- Size: S, M, L
- Model: Trim Fit
- Highlight: **Gorgeous Slim Fit Evening Gowns,
Slim Fit Evening Gowns With Shoulders,
Elegant Floral Dress With Shoulders**



More Images



Product Description

Gorgeous slim-fit evening dress - elegant floral dress with shoulders

Technical Parameters:

Attribute	Value
Pattern Type	Solid
Color	Customizable
Material	Cotton,polyester Fiber
Occasion	Evening
Embellishment	Embroidery
Fashion Element	Falbala,sloping Shoulder,slit
Neckline	V-neck
Waistline	High Waist
Gender	Female
Season	Autumn/Winter
Keywords	New Fashion Dress for Women, Ladies Trending Dress, Trends Ladies Dress, New Fashion Dresses

Product Description:

This stylish slim-fit evening dress is perfect for any special occasion. Girls and ladies of all ages can look and feel their best in this stylish dress. It is a favorite of fashion influencers and women all over the world. It features a zipper design plus a slim-fitting cut that is made from the finest fabric material for ultimate comfort. The dress is available in a variety of colors and can be customized to match any look or event. Feel your best in this women's trend dress and inspire your inner fashionista.



后背选用时尚拉链设计，完美贴合腰身曲线，塑型效果更加完美，耀眼而迷人，展现完美视觉。

Features:

Product Name: **Slim Evening Dress**

Embellishment: **Embroidery**

Color: **Customizable**

Waistline: **High Waist**

Pattern Type: **Solid**

Occasion: **Evening**

Special Features: **Latest dresses for ladies party wear, Womens stylish dresses, Ladies trending dress**

Applications:

Classy Dresses for Women - Slim Evening Dress

Be fashionable and classy in this Slim Evening Dress from China. This new fashion dress for women is perfect for a modern dress for women party wear. It has a high waist and a slim fit, making it perfect for female dress for knee-length. The fashion elements of this dress include falbala, sloping shoulder and slit, making it one of the most stylish dresses for women.

With this Slim Evening Dress, you will be able to show-off your fashion sense and be the center of attention. This stylish dress is made from high-quality material and is perfect for any occasion. Get the perfect slim fit and make a fashion statement with this dress.

Customization:

Welcome to couture's latest and most stylish collection of women's party dresses. Our slim-fit evening gowns are made in China and are perfect for any evening occasion. It is customizable in colors and comes with gorgeous embroidery for an elegant look. Whether you are looking for the perfect dress for a special occasion or just want to look beautiful, our Women's slim-fit evening gowns are the perfect choice.

FAQ:

Q: Where is the Slim Evening Dress made?

A: The Slim Evening Dress is made in China.

Q: What kind of material is the Slim Evening Dress made of?

A: The Slim Evening Dress is made of high-quality fabrics.

Q: What sizes are available for the Slim Evening Dress?

A: The Slim Evening Dress is available in sizes S, M, L, XL and XXL.

Q: What colors are available for the Slim Evening Dress?

A: The Slim Evening Dress is available in black, white, pink and blue.

Q: How should I care for the Slim Evening Dress?

A: Please follow the care instructions included with the Slim Evening Dress.

VINAS DRESS Guangzhou Vinas clothing technology Co., LTD



15827133024



leopeng15827133024@gmail.com



stylishladydress.com

Building F, No. 3 Nanpu Nangui Road, Luopu Street, Panyu District, Guangzhou City