

French Style Slim Evening Dress Cross Strap Halter Slim Mid Length Evening Dress

Our Product Introduction

for more products please visit us on stylishladydress.com

Basic Information

- Place of Origin: china
- Model Number: 9632
- Minimum Order Quantity: expand on
- Price: expand on

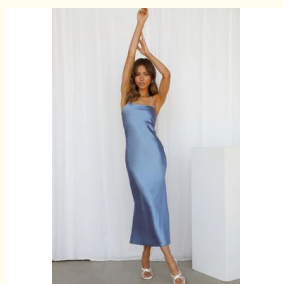


Product Specification

- Color: Customizable
- Season: Autumn/Winter
- Sleeve Length: Sleeveless
- Fashion Element: Crossover Strap
- Length: Knee-length
- Embellishment: Embroidery
- Size: S, M, L
- Closure Type: Pullover
- Model: Trim Fit
- Highlight: **French Style Slim Evening Dress,
Slim Evening Dress Cross Strap,
Halter Slim Mid Length Evening Dress**



More Images



Product Description

French style cross strap large halter slim mid-length evening dress

Technical Parameters:

Product Attribute	Description
Name	Slim Evening Dress
Gender	Female
Pattern Type	Solid
Season	Autumn/Winter
Size	S, M, L
Closure Type	Pullover
Sleeve Length	Sleeveless
Neckline	boat neck
Color	Customizable
Style	Slim

Product Description:

This stylish and fashionable Slim Evening Dress is the perfect choice for ladies looking for trending fashion. It comes with customizable colors, long sleeve or sleeveless options, and knee-length design, allowing you to find the perfect fit for your style. The solid pattern type makes this dress suitable for all kinds of occasions, making it the perfect addition to your female fashion styles. This Slim Evening Dress is an excellent choice for stylish traditional dresses for ladies, making it a must-have fashion item for your wardrobe.





Features:

Product Name: Slim Evening Dress

Gender: Female

Neckline: boat neck

Season: Autumn/Winter

Waistline: High Waist

Fashion dress for ladies

Fashion wear for ladies

Stylish outfits for women

Applications:

Slim Evening Dresses are the perfect choice for trendy women's clothing. With a classy design and stylish outfit, these dresses will take your wardrobe to the next level. Crafted with premium cotton and polyester fiber, the dress is designed to be lightweight and comfortable. Long sleeves or sleeveless, it can be customized to suit any occasion. The solid pattern is elegant and timeless. The pullover closure ensures a snug and secure fit, so you can move with ease. Get ready to look your best with a slim evening dress.

Customization:

Slim Evening Dress

Classy dresses for women! Enjoy the latest female fashion styles with this trendy ladies dress. This slim evening dress is perfect for any

special occasion.

Place of Origin: China

Length: Knee-length

Size: Small, Medium, Large

Waistline: High Waist

Neckline: V-neck

Fashion Elements: Falbala, Sloping Shoulder, Slit

Looking for a stunning dress for the evening? Look no further than this slim evening dress! Get the latest trends and make a statement with this classy and stylish dress.

FAQ:

Q: What is the Place of Origin for the Slim Evening Dress?

A: The place of origin for the Slim Evening Dress is China.

Q: What materials is the Slim Evening Dress made of?

A: The Slim Evening Dress is made of Cotton blend.

Q: How do I care for my Slim Evening Dress?

A: Please follow the instructions on the care label for the best results.

Q: Is the Slim Evening Dress available in other sizes?

A: Yes, the Slim Evening Dress is available in a range of sizes.

Q: Is the Slim Evening Dress available in other colors?

A: Yes, the Slim Evening Dress is available in a range of colors.

VINAS DRESS

Guangzhou Vinas clothing technology Co., LTD



15827133024



leopeng15827133024@gmail.com



styishladydress.com

Building F, No. 3 Nanpu Nangui Road, Luopu Street, Panyu District, Guangzhou City